



Assetz

66 &  
SHI  
BUI

WHITEFIELD  
MAIN ROAD

INTRODUCING



# THE BLACK SERIES

The concept of this series is rooted in the commitment to define luxury at every touch point of a home. From the distinguished tiles to the detailed capitals to the elegant fixtures, the series is poised to set new benchmarks for architectural excellence.

But our dedication does not stop at the exterior. Inside each residence, we strive to leave no stone unturned. From exquisite Italian marble flooring to award-winning sanitary fittings and fixtures, we have thoughtfully created each aspect to meet an uncompromising standard. Above all, our aim is to ensure that residents experience an elevated sense of luxury in every element of their abode.



# BEAUTY IN THE DETAILS

---

A boutique residential high-rise in Whitefield, inspired by the mystical Japanese aesthetic of Shibu. Designed to bring out love, intelligence, light, and joy in every aspect of living, with beauty that is simply understated and yet enriched in details.





666  
SHI  
BUI

PROPOSED  
2021 - 2022

# ACCESSIBILITY



**▬▬▬▬** Interstate

**▬▬▬** SR 12

**▬▬▬▬** State Road 40

**▬▬▬▬** Highway 401

**▬▬▬▬** State Road 201

**▬▬▬** SR 11

**▬▬▬▬** Strategically located to offer sophisticated warehousing and distribution connections to major port facilities, numerous 401 firms, key arterial roads, highways, and other essential services.



## AROUND 66 & SHIBUI

*Whitefield main road*, one of the most preferred and popular areas of Whitefield for residents in the locality with restaurants, shopping malls, schools, healthcare, and all other essential facilities just a stone's throw away it offers everything one would ever need.

### HEALTH, FITNESS & RECREATION

- Health Eye
- Inner Circle Park
- Neelika Hospital
- Marjyal Hospital

### EDUCATION

- Start Centre for Child Development and Care

### CAFFES & RESTAURANTS

- Old Spice Street
- Four Points by Sheraton
- Gloria Bakery
- Grand Hotels & Resorts
- Luvita Burgers & Wings

### SHOPPING & ENTERTAINMENT

- Home Mall
- Flamingo
- Source Station & Spa



A SENSE  
OF ARRIVAL

# STEP INTO TRANQUILLITY

Crafted to redefine elegance, the individual entry to the project, the elevation, and each home have been meticulously designed to foster an ambience that is both inviting and aspirational, welcoming you into a world defined with effortless natural charm and timeless beauty.

---







## THE FACADE

---

The facade of M&L School is constructed with natural stone cladling, the subtle details of which leave one in awe of its simplicity. The black stone cladling and our generously sized windows provide natural light, insulate the building, and regulate temperatures, bringing together energy efficiency with a pleasant environment for you to attend to.

# FLOOR PLANS

---

Experience the elegance of spacious living with expansive decks, open dining and living areas with masterfully crafted large master suites to choose from. Each unit plan is thoughtfully designed to elevate your everyday living to a plane of luxury and efficiency.

# 3 BHK

2184 SQFT

(SQA)

1896 SQFT

(TOTAL COVERED AREA (GROSS BALCONY))



# 4 BHK

3044 SQFT  
1000

3280 SQFT  
1000 (NET AREA) (AREA COVERED + BALCONY)



# MASTER PLAN

---

A strategic blueprint spanning 3 acres, centered around creating a fulfilling living experience for the residents. Alongside the spacious and thoughtfully designed apartments, our range of meticulously curated amenities and lush landscapes enhance convenience, leisure, and recreation, for you to embrace an amazing lifestyle.



## **LEGEND**

- |                       |                             |
|-----------------------|-----------------------------|
| 1. Entrance           | 10. Party Room              |
| 2. Security           | 11. Outdoor Gym             |
| 3. Ramp/Elevator/Hall | 12. Social Place with Games |
| 4. Lobby Entrance     | 13. Reading Room            |
| 5. Pedestrian Plaza   | 14. Pet Park                |
| 6. Swimming Pool      | 15. Services                |
| 7. Kids' Pool         | 16. Children's Play Area    |
| 8. Changing Room      |                             |
| 9. Tennis Court       |                             |



# THE CLUBHOUSE





# AMENITIES

With exclusive access to the best of world class amenities.

## COMMON AMENITIES

1. Swimming Pools
2. Tennis Courts
3. Children's Play Area
4. Outdoor Gym
5. Seating Areas
6. Party Room

## CLUBHOUSE AMENITIES

1. Gymnasium
2. Yoga / Meditation Studio
3. Indoor Tennis / Courtroom
4. Pool Tables
5. Table Tennis
6. Multipurpose hall with Party Facility
7. Discussion Lounge



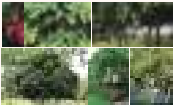
# LANDSCAPE

---

Our landscape treats the existing gateway as an archway connecting residents with various levels of nature. Moreover, a perfect blend of form and foliage has been integrated, that entices your senses painting a beautiful picture as you walk through the path of life & thrive surrounded by the past.



The area also boasts a variety of indigenous trees such as neem, wood apple, and more which abundantly contribute to the ecosystem and enhance the natural beauty of the surroundings. The considerable fusion of multiple contrasting natural elements brings the best of both nature inside and outside of the project.



© 2023/2024

# SPECIFICATIONS

---

## LEVEL

### Structure



Single or double level framed structure with fixed flooring

### ADDITIONAL FEATURES

#### Roofs



Flat roof or gabled wooden slates with concrete finish. Gabled roof with a gable end for main doors

Structural steel or ground wooden slates with concrete finish

Timber frame (impregnated wooden slates with concrete or the structural concrete finish on the roof)

#### Windows, Sliding Doors & Ventilators



Frames of the structure from impregnated profiles doors and windows with mosquito net

Galvanized powder coated aluminum ventilators - food-compatible with pressure throughout life

#### Flooring & Wall Cladding



Living flooring (floor, marble)

Structure with floor tiles



Bedrooms (impregnated wooden flooring)



Bedrooms, balcony or utility with floor (acoustic) (structural floor, tiles)

### Paint



External walls & ceiling acrylic emulsion



Internal walls (moisture proof with concrete grade acrylic emulsion, along with the impregnation of roof, floor & floor)

### Balcony Railings



Wrought iron and iron railings with stainless steel finish

### Fabric Ceiling



Timber wooden frame with fabric ceiling or aluminium

## PLUMBING, ELECTRICAL & SERVICES

### Oil, Sanitary, Fittings & Fixtures



Separate water supply system equivalent with the meter for shower or oil tanks and hot water in the water tank



Separate or equivalent individual flush system and sewerage line



### Electrical Fixings

Waterproof or waterproof independent switches and distribution board



### Grid Power & Backup Power

#### Grid power

2 000 - 1200  
2 000 - 10 000



#### Backup power

sets of batteries inside the apartments and home backup for communication, lighting, lifts, and others



#### Services

Water treatment plant  
Waste treatment plant



#### Residents

Resident services organization



#### Waste & Security

Waste and security services

## GREEN FEATURES

### Water Conservation

Water tank, dual piggybacking and flush system for sanitary through

Washbasin water used for flushing purposes & low-flow flush valves

Water efficient fixtures

Wastewater harvesting

Groundwater recharge

### Energy Conservation

Wastewater solar treated water reuse tank at top two floor apartments

Energy efficient lights in common areas

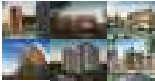
Motor adjusted stairlights

### Waste & Security Management

Segregation of waste

Waste water treatment





## ABOUT ASSETZ

---

Every square inch of an Assetz property reflects our "flexible design" philosophy: these ground-level forms that let streams of natural light, where space is intelligently managed and every centimeter is of the highest quality. By nurturing the geometry of all around, we create living spaces that are cherished homes.

Our team comprises over 250 professionals who bring outstanding expertise to their respective fields. The team also have 16 year average of rich cross-industry skills across the board.

Our mission is to balance the need to break through the clutter of a highly competitive market where trends and fashion have a very short shelf life, with the demands of cost and master confidence. A key to not succumb to this is to conceive architecture that expresses a sort of timelessness – responding to forms that are immovable to the site and the surrounding context and not to passing trends – in order to create something that cannot be replicated elsewhere.

**Business:** The company has a long and successful track record in the business of providing a wide range of services to its customers. The Company has a proven track record for its ability to create value for its customers, and its strong financial performance is reflected in its consistent growth and profitability. The Company's success is due to its strong customer relationships, its ability to identify and capitalize on new market opportunities, and its commitment to innovation and operational excellence. The Company's strong financial performance is reflected in its consistent growth and profitability. The Company's success is due to its strong customer relationships, its ability to identify and capitalize on new market opportunities, and its commitment to innovation and operational excellence. The Company's strong financial performance is reflected in its consistent growth and profitability. The Company's success is due to its strong customer relationships, its ability to identify and capitalize on new market opportunities, and its commitment to innovation and operational excellence.

**FINANCIAL STATEMENTS AND SUPPLEMENTAL INFORMATION**



Assetz  
Investment Management  
10000 North Central Expressway  
Suite 1000  
Dallas, Texas 75243



Equity  
Partners  
10000 North Central Expressway  
Suite 1000  
Dallas, Texas 75243

10000 North Central Expressway  
Suite 1000  
Dallas, Texas 75243